



Automation & Triggers

KEY FEATURES

- When something we are monitoring is greater than, less than or equal to an operator-specified condition:
 - then take a certain action at one – or all pumps
- Event Triggers
 - Time scheduled automatic off times
 - Water flow rate
 - Flow switch activity
 - Diesel engine RPM
 - Diesel pump battery voltage
 - Soil moisture probe levels
 - Water level probes
 - Pump shutdown fault
 - Maintenance alert
- Actions that can be taken based on an event trigger
 - Turn off a diesel or electric pump
 - Turn on an electric pump
 - Send an alert message to the operator

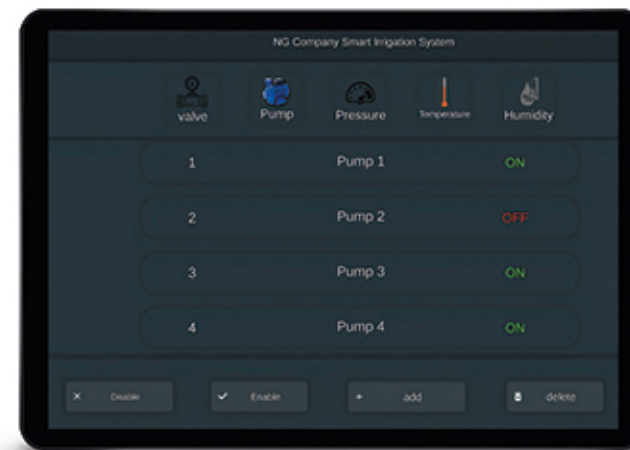


At a glance - you can see the operation status of all Smart Farm monitored devices. Color-coded icons indicate active, inactive and off-line pump states as well as equipment faults and data from environmental sensors. The key features and interface screens are shown here.

Smart Node Status

KEY FEATURES

- List display of node type, name and location, activity status, internal temperature, ambient temp, latency and battery
- Sort by any category in the list
- Trend lines associated with internal temperature and battery



Dashboard and Map

KEY FEATURES

- Navigate around the map
 - Zoom in or out on a single device
 - Touch the icon and see detailed information
- Includes drop down list and "All Off" pump commands to take advantage of sudden rainfall

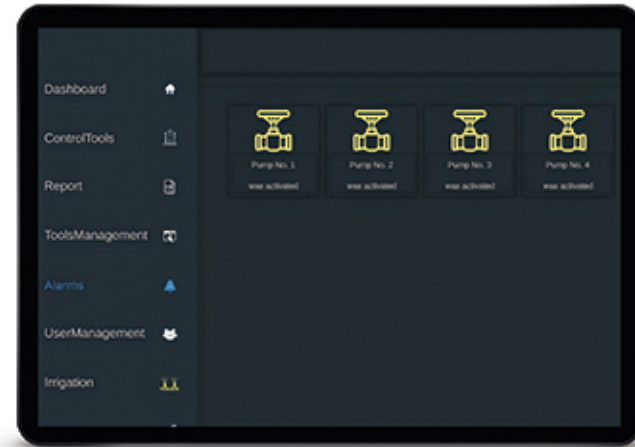




Alerts

KEY FEATURES

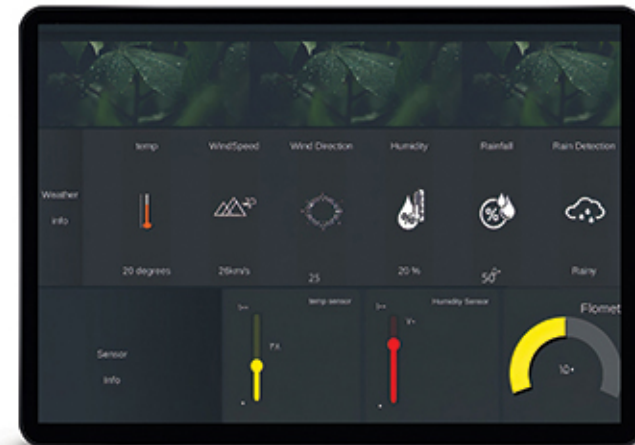
- Alarm notification using the SMS system, mail and voice call
- List display of node events, node failures, schedule event
- Scheduling the priority of sending notifications



Weather Stations

KEY FEATURES

- List display of node type, name and location, activity status, internal temperature, ambient temp, latency and battery
- Sort by any category in the list
- Trend lines associated with internal temperature and battery



Pump Status

KEY FEATURES

- Displays a list of pump type, name and location, activity status, run time, flow rate, RPM, fuel level, and battery voltage and fault status
- Trend lines associated with well flow rate, RPM, fuel level, battery voltage, fault event timing and local weather station data

